



The **first choice**  
for those who want the  
**best** in manufacturing

[www.jphildreth.com](http://www.jphildreth.com)



Experts in engineering design and project management for food and pharmaceutical manufacture

# Who we are



We are professional Chartered engineers with unrivalled expertise in the design and optimisation of process and packaging lines: we specialise in food, healthcare and pharmaceutical manufacturing.

Our manufacturing knowledge has been gained in the UK's most technically advanced factories.

What makes our engineers stand out from the crowd is the drive and determination they bring to every project.



## Clients say

“

*Very impressed with their speed and flexibility. They hit the ground running at short notice, fulfilled the brief and gave more than expected. There was real added value.*

”



ADVANCED TECHNOLOGY MANAGER, PEPSICO

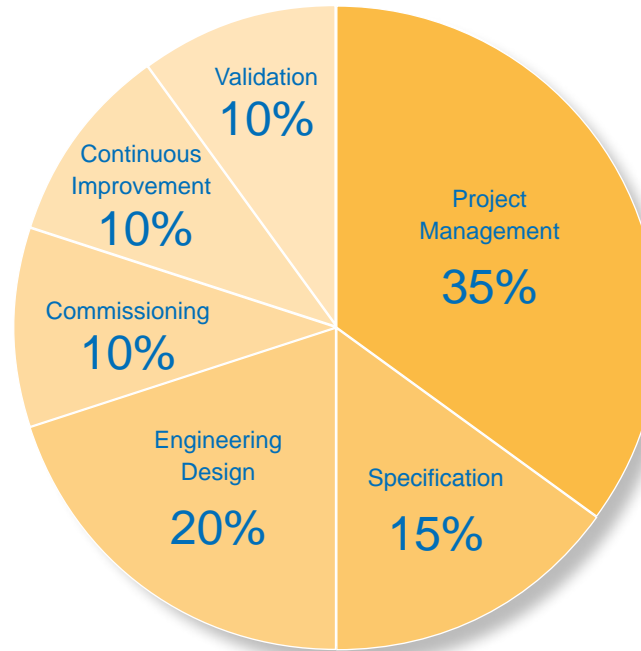
# What we do

We partner with ambitious companies to create world-class production environments.

Working shoulder-to-shoulder with your team, we bring depth and breadth of engineering knowledge to capital investment and continuous improvement projects.

Our role is to drive your project forward, motivate the team, keep tight control of time and costs and overcome engineering challenges with ingenious solutions.

We apply a formal project management process with both stage gate reviews and regular project reviews with your site team.



## Clients say

“

*With the help of jph we are on track to have the fastest, most efficient, most responsive lines in the UK biscuit and savoury snacks industry.*

”



HEAD OF ENGINEERING, BURTON'S BISCUIT COMPANY



# Our Services



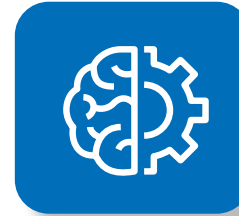
Our team of engineers has the range and depth of skills and experience needed to tailor services to your precise requirements.

From the start to the finish of your engineering project, our emphasis is on quality and Health & Safety. We will keep your production lines running smoothly.

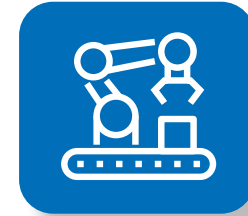
We bring the rigour and discipline of our engineering background to capital investment and continuous improvement projects.



Engineering Design



Project Management



Production Line Performance



Project Proposals



Validation



Interim Support



## Clients say



*jph has delivered fantastic value on a number of projects. These ranged from leading-edge robotics in our biscuit factories to improved process design in our ready meals sites.*



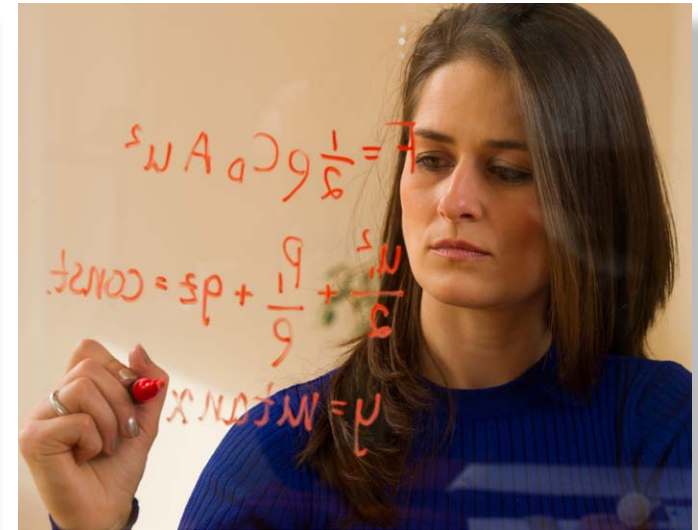
CEO - NORTHERN FOODS PLC

# Our Skills



- Project Management
- Process & Chemical Engineering
- Mechanical Engineering
- Automation
- Robotics
- Electrical & Control Engineering
- Industrial Engineering and Lean Six Sigma
- CDM Support & Site Management
- Pharma Validation and Qualification
- Training

With these skills, we make project delivery easier for you and for your site team.



## Clients say



*Anyone who trawls the pool for quality engineers will know that good people are hard to find; with their blue-chip background, jph has provided a number of experienced, capable and committed people who have contributed immediately with a minimum of supervision.*

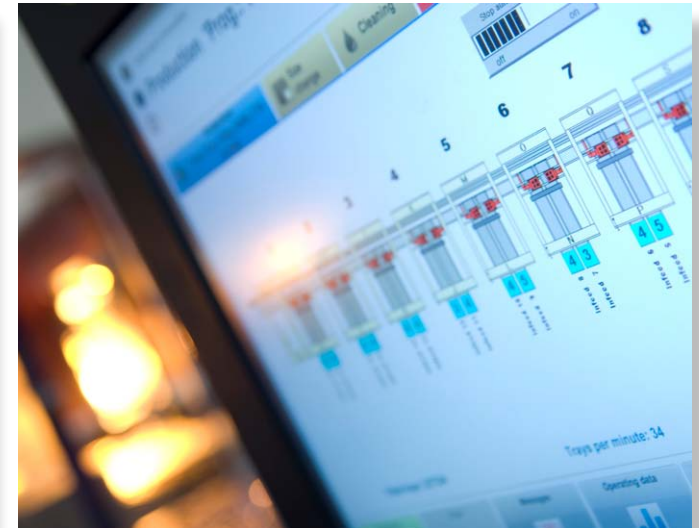
PROJECT MANAGER - GLAXOSMITHKLINE



# Who we work with



It is our privilege to work with the most forward-thinking manufacturing companies in the UK.



Clients say

“

*jph has a wealth of engineering expertise gained in the very best blue-chip environments. The most important consideration is that they deliver.*

”



SUPPLY CHAIN DIRECTOR - PLADIS GLOBAL  
(HOME OF GODIVA, CARR'S, MCVITIE'S AND ULKER BISCUITS)



# Work with us



We work closely with your site personnel through all stages and remain on site during installation, commissioning and production support.

An experienced project manager will be your main point of contact and the same team will carry out your project from start to finish.

To discuss your requirements and our unique approach:

Call + 44 (0) 1494 418272

Email [info@jphildreth.com](mailto:info@jphildreth.com)

The first site meeting is free and without obligation.



## Clients say

“

*All timelines were discussed openly with jph and clear objectives identified at the earliest opportunity. And whenever a milestone was agreed, it was reached on time.*

”



SUPPLY CHAIN MANAGER, PAI SKINCARE  
(QUEEN'S AWARD FOR ENTERPRISE FOR INTERNATIONAL TRADE 2016)

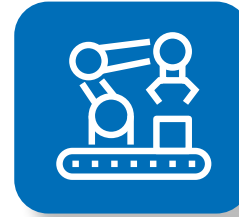
Our company values of simplicity, clarity, focus and integrity define our approach.



Engineering Design



Project Management



Production Line  
Performance



Project Proposals



Validation



Interim Support



*We have the energy and determination to overcome challenges  
and deliver simple, elegant solutions for our clients.*

JON HILDRETH, MANAGING DIRECTOR



J P Hildreth Limited  
Unit 7, Chiltern House  
Waterside  
Chesham  
Buckinghamshire  
HP5 1PS  
UK

tel: +44 (0) 1494 418272  
email: [info@jphildreth.com](mailto:info@jphildreth.com)  
[www.jphildreth.com](http://www.jphildreth.com)